

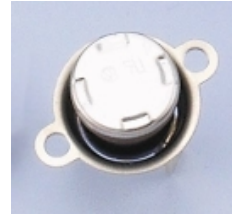
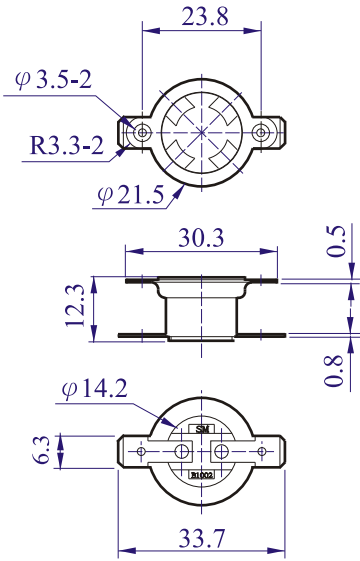


SANG MAO

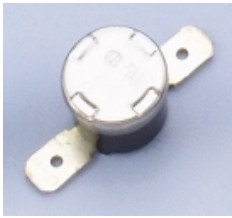
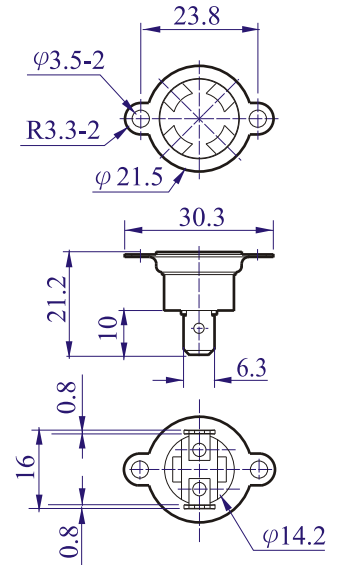
SERIES B-1002 (1292)



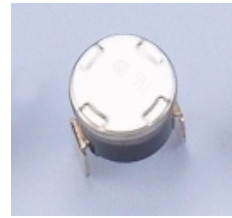
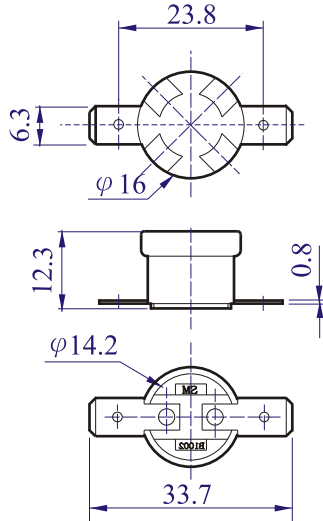
1292 A



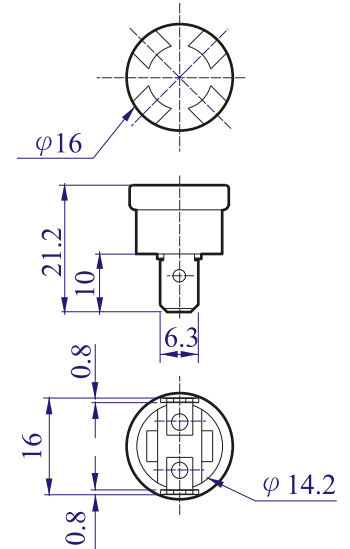
1292 B



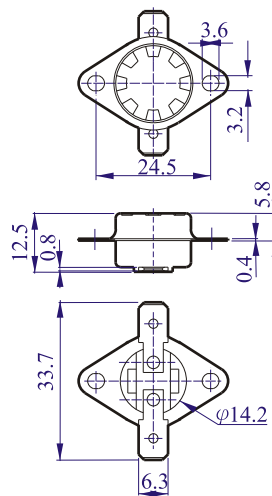
1292 M



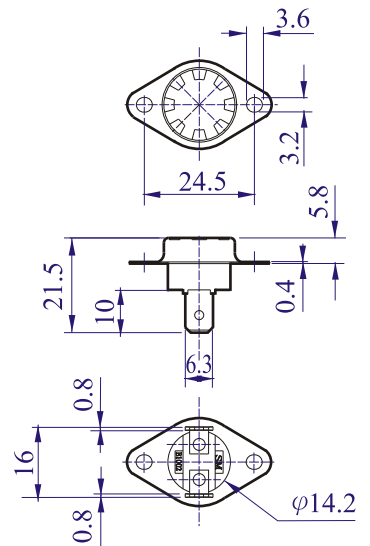
1292 N



1292 T



1292 U



Order Part No. **1292** -

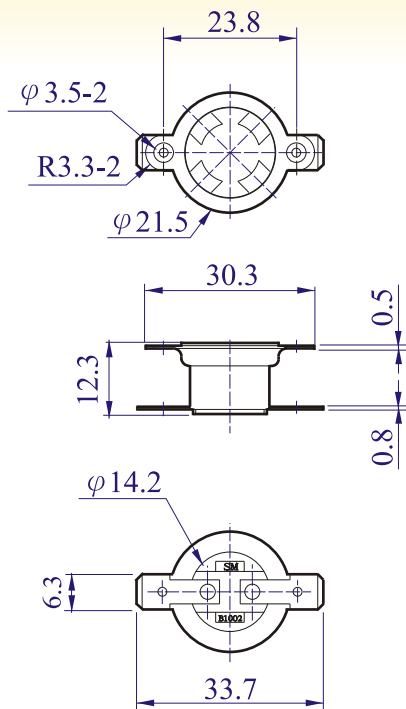
Flange Temperature Range

(FILE=1292X07) NO EXTRA NOTIFICATION FOR PRODUCT SCALE CHANGE

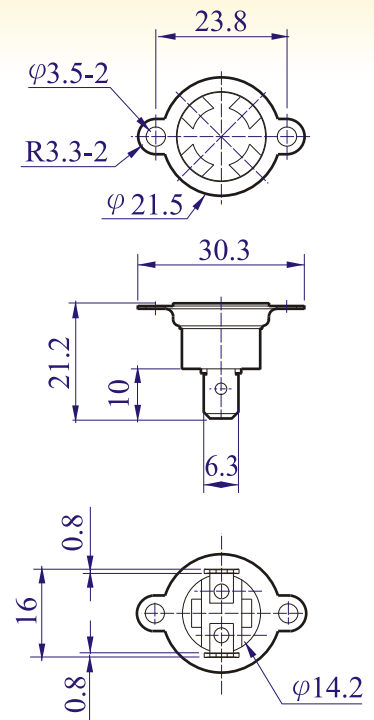


SANG MAO

SERIES B-1002A.B (1292A.B)



B-1002A



B-1002B

DIMENSION IN mm

SPECIFICATIONS:

- * TEMPERATURE RANGE: **45 - 165°C**
- * OPERATING TOLERANCE: **±5°C, ±8°C, ±10°C**
- * RESET DIFFERENTIAL: **10°C - 50°C**
- * INPUT POWER: **32 VDC / 125 VAC / 250 VAC**
- * CONTACTS TYPE: **NORMALLY CLOSE / NORMALLY OPEN .**
- * CONTACTS ENDURANCE: (RESISTIVE LOAD)
 - 32VDC × 100mA -- 50,000 CYCLES**
 - 125VAC × 10A -- 100,000 CYCLES**
 - 125VAC × 15A -- 30,000 CYCLES**
 - 250VAC × 6A -- 30,000 CYCLES**
- * INTERRUPT CAPACITY: **125VAC × 60A -- 5 CYCLES .**
- * OVERSHOOT TEMPERATURE: **200°C / 5 MINUTES .**
- * DIELECTRIC STRENGTH: **1500VAC / 1 MINUTE .**
- * METHOD OF OPERATION : **AUTOMATIC INTERRUPTION AND AUTOMATIC RESETTING .**
- * **IEC - 934** METHOD OF TRIPPING: "**TO**" = **THERMAL .**
- * DEGREE OF TRIP - FREE BEHAVIOUR : "**CYCLING TRIP - FREE**"
- * RESET TYPE: **AUTO RESET .**

APPROVAL :

- U L** APPROVAL: **75°C - 145°C**
10A 125VAC 100,000 CYCLES
- CSA** APPROVAL: **75°C - 145°C**
10A 125VAC 100,000 CYCLES

APPLICATIONS :

- * TEMPERATURE CONTROLLER
- * COFFEE MAKER
- * DISH WASHER
- * HOT PLATE

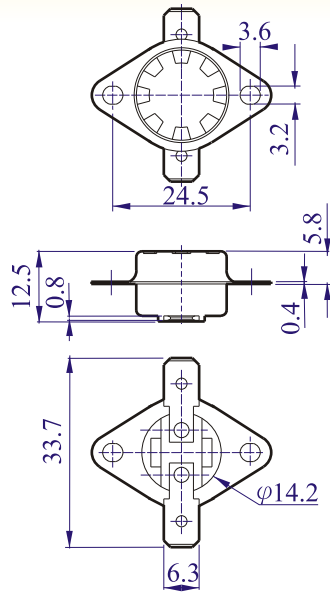


SANG MAO

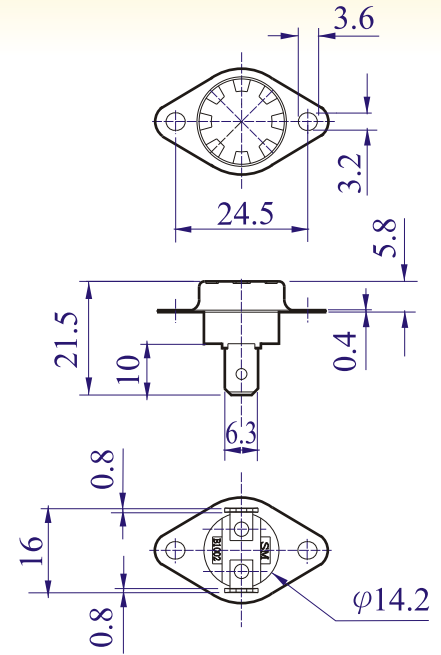
SERIES B-1002T.U (1292T.U)



B-1002T



B-1002U



DIMENSION IN mm

SPECIFICATIONS:

- * TEMPERATURE RANGE: **45 - 165°C**
- * OPERATING TOLERANCE: **±5°C, ±8°C, ±10°C**
- * RESET DIFFERENTIAL: **10°C - 50°C**
- * INPUT POWER: **32 VDC / 125 VAC / 250 VAC**
- * CONTACTS TYPE: NORMALLY CLOSE / NORMALLY OPEN .
- * CONTACTS ENDURANCE: (RESISTIVE LOAD)
 - 32VDC × 100mA -- 50,000 CYCLES**
 - 125VAC × 10A -- 100,000 CYCLES**
 - 125VAC × 15A -- 30,000 CYCLES**
 - 250VAC × 6A -- 30,000 CYCLES**
- * INTERRUPT CAPACITY: **125VAC × 60A -- 5 CYCLES .**
- * OVERSHOOT TEMPERATURE: **200°C / 5 MINUTES .**
- * DIELECTRIC STRENGTH: **1500VAC / 1 MINUTE .**
- * METHOD OF OPERATION : **AUTOMATIC INTERRUPTION AND AUTOMATIC RESETTING .**
- * **IEC - 934** METHOD OF TRIPPING: "**TO**" = **THERMAL .**
- * DEGREE OF TRIP - FREE BEHAVIOUR : "**CYCLING TRIP - FREE**"
- * RESET TYPE: AUTO RESET .

APPROVAL :

- U L** APPROVAL: **75°C - 145°C**
10A 125VAC 100,000 CYCLES
- CSA** APPROVAL: **75°C - 145°C**
10A 125VAC 100,000 CYCLES

APPLICATIONS :

- * TEMPERATURE CONTROLLER
- * COFFEE MAKER
- * DISH WASHER
- * HOT PLATE

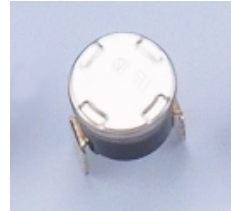
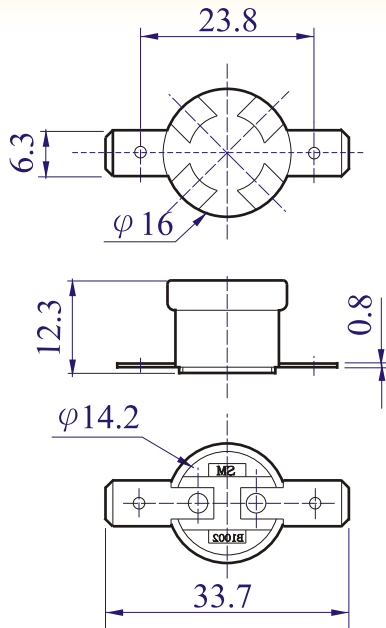


SANG MAO

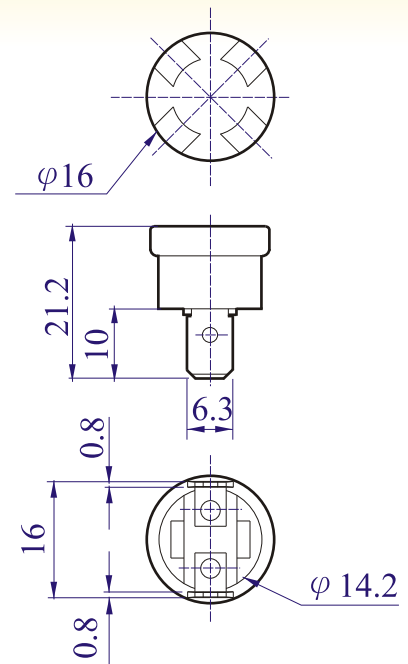
SERIES B-1002M.N (1292M.N)



B-1002M



B-1002N



DIMENSION IN mm

SPECIFICATIONS:

- * TEMPERATURE RANGE: **45 - 165°C**
- * OPERATING TOLERANCE: **±5°C, ±8°C, ±10°C**
- * RESET DIFFERENTIAL: **10°C - 50°C**
- * INPUT POWER: **32 VDC / 125 VAC / 250 VAC**
- * CONTACTS TYPE: **NORMALLY CLOSE / NORMALLY OPEN .**
- * CONTACTS ENDURANCE: (RESISTIVE LOAD)
 - 32VDC × 100mA -- 50,000 CYCLES**
 - 125VAC × 10A -- 100,000 CYCLES**
 - 125VAC × 15A -- 30,000 CYCLES**
 - 250VAC × 6A -- 30,000 CYCLES**
- * INTERRUPT CAPACITY: **125VAC × 60A -- 5 CYCLES .**
- * OVERSHOOT TEMPERATURE: **200°C / 5 MINUTES .**
- * DIELECTRIC STRENGTH: **1500VAC / 1 MINUTE .**
- * METHOD OF OPERATION : **AUTOMATIC INTERRUPTION AND AUTOMATIC RESETTING .**
- * **IEC - 934** METHOD OF TRIPPING: "**TO**" = **THERMAL .**
- * DEGREE OF TRIP - FREE BEHAVIOUR : "**CYCLING TRIP - FREE**"
- * RESET TYPE: **AUTO RESET .**

APPROVAL :

- U L** APPROVAL: **75°C - 145°C**
10A 125VAC 100,000 CYCLES
- CSA** APPROVAL: **75°C - 145°C**
10A 125VAC 100,000 CYCLES

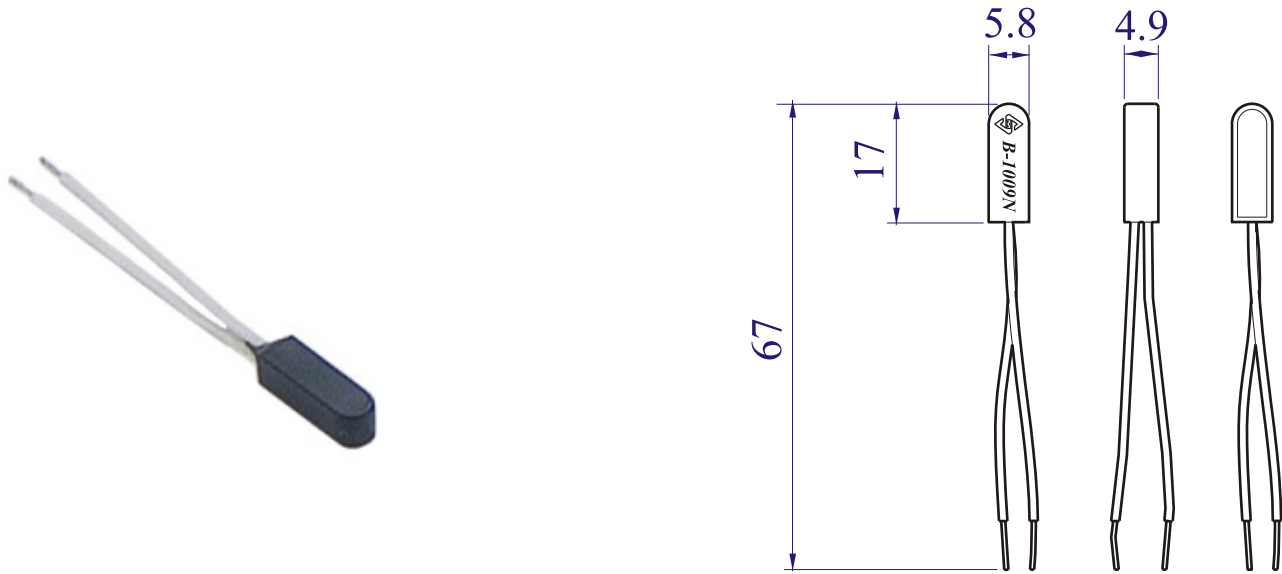
APPLICATIONS :

- * TEMPERATURE CONTROLLER
- * COFFEE MAKER
- * DISH WASHER
- * HOT PLATE



SANG MAO

SERIES B-1009N (1992N)



DIMENSION IN mm

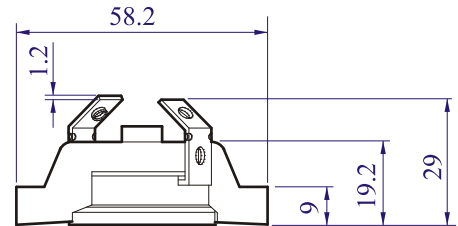
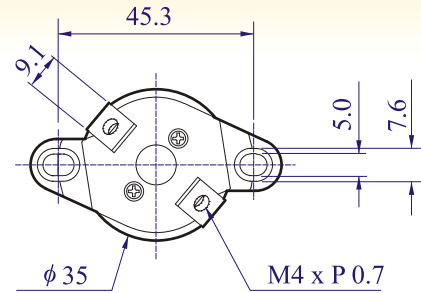
SPECIFICATIONS:

- ✧ TEMPERATURE RANGE: **45 - 140°C** (AT NO LOAD)
- ✧ OPERATING TOLERANCE: **±5°C**
- ✧ RESET DIFFERENTIAL: **5°C - 50°C**
- ✧ INPUT POWER: **12/24 VDC / 125/250 VAC**
- ✧ CONTACTS TYPE: NORMALLY CLOSE(NNC) / NORMALLY OPEN(NNO) .
- ✧ CONTACTS ENDURANCE: (RESISTIVE LOAD)
 - 24VDC** × **100mA** -- 20,000 CYCLES
 - 24VDC** × **2A** -- 10,000 CYCLES
 - 125VAC** × **2A** -- 10,000 CYCLES
 - 250VAC** × **1A** -- 10,000 CYCLES
- ✧ OVERSHOOT TEMPERATURE: **180°C / 3 MINUTES .**
- ✧ DIELECTRIC STRENGTH: **1500VAC / 1 MINUTE .**
- ✧ LEAD WIRE: AWG # **22** × **50** mm
- ✧ HOUSING MATERIAL: POLYAMIDE
- ✧ FEATURES: WATERPROOF
SMALL SIZE
SHORT CURRENT FAST ACTION
- ✧ METHOD OF OPERATION : **AUTOMATIC INTERRUPTION AND AUTOMATIC RESETTING .**
- ✧ **IEC - 934** METHOD OF TRIPPING: "**TO**" = **THERMAL .**
- ✧ DEGREE OF TRIP - FREE BEHAVIOUR : "**CYCLING TRIP - FREE**"
- ✧ RESET TYPE: AUTO RESET .

APPLICATIONS :

- ✧ RECHARGE BATTERY UNIT
- ✧ MOTOR WINDING
- ✧ POWER ADAPTOR

SERIES B-2002



DIMENSION IN mm

SPECIFICATIONS:

- * TEMPERATURE RANGE: **75 - 130 °C**
- * OPERATING TOLERANCE: **± 5 °C , ± 8 °C , ± 10 °C .**
- * RESET DIFFERENTIAL: **10 °C - 60 °C**
- * INPUT POWER: **125 VAC / 250 VAC**
- * CONTACTS TYPE: NORMALLY CLOSE / NORMALLY OPEN .
- * CONTACTS ENDURANCE: (RESISTIVE LOAD)
 - 125VAC × 40A -- 6,000 CYCLES**
 - 250VAC × 30A -- 6,000 CYCLES**
- * INTERRUPT CAPACITY: **125VAC × 100A -- 5 CYCLES .**
- * OVERSHOOT TEMPERATURE: **200 °C / 5 MINUTES .**
- * DIELECTRIC STRENGTH: **1500VAC / 1 MINUTE .**
- * RESET TYPE: AUTO RESET .

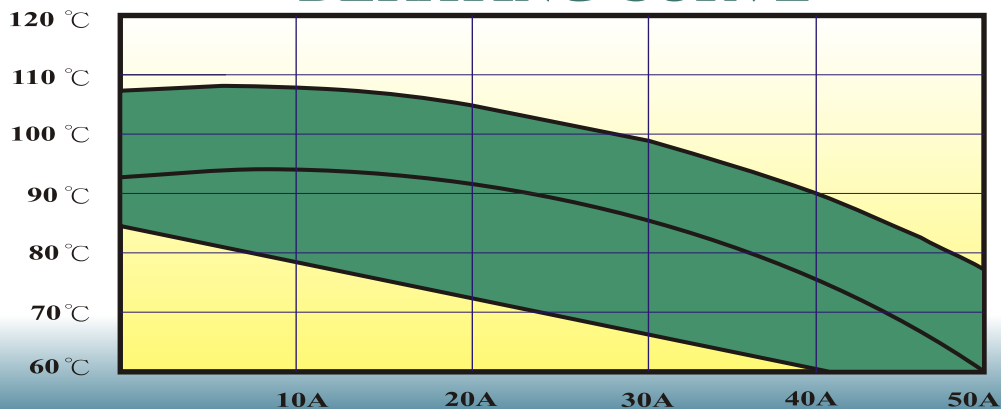
APPROVAL :

U L APPROVAL: **75 °C- 105 °C**
40A 125VAC
30A 250VAC

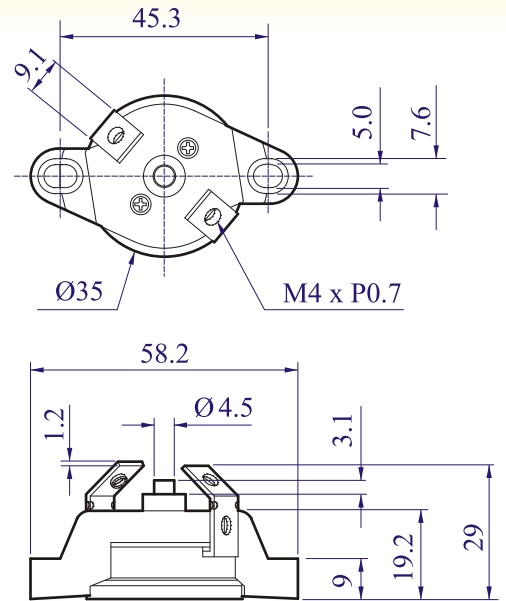
TUV APPROVAL: **70 °C- 130 °C**
45A 250VAC

- ## APPLICATIONS :
- * HIGH POWER HEATER
 - * OVEN
 - * WATER HEATER & RELATIVE APPLICATION

DERATING CURVE



SERIES B-2002M



DIMENSION IN mm

SPECIFICATIONS:

- ✧ TEMPERATURE RANGE: **75 - 130°C**
- ✧ OPERATING TOLERANCE: **±5°C , ±8°C , ±10°C**
- ✧ RESET DIFFERENTIAL: **10°C - 60°C**
- ✧ INPUT POWER: **125 VAC / 250 VAC**
- ✧ CONTACTS TYPE: NORMALLY CLOSE .
- ✧ CONTACTS ENDURANCE: (RESISTIVE LOAD)
 - 125VAC x 40A -- 6,000 CYCLES**
 - 250VAC x 30A -- 6,000 CYCLES**
- ✧ INTERRUPT CAPACITY: **125VAC x 100A -- 5 CYCLES .**
- ✧ OVERSHOOT TEMPERATURE: **200°C / 5 MINUTES .**
- ✧ DIELECTRIC STRENGTH: **1500VAC / 1 MINUTE .**
- ✧ RESET TYPE: MANUAL RESET .

APPROVAL :

TUV APPROVAL: 70°C- 130 °C
50A 250VAC

APPLICATIONS :

- ✧ HIGH POWER HEATER
- ✧ OVEN
- ✧ WATER HEATER & RELATIVE APPLICATION

DERATING CURVE

